



Evolution Products

NXTware Remote for OpenVMS:

Integrated Remote Development for legacy and new applications

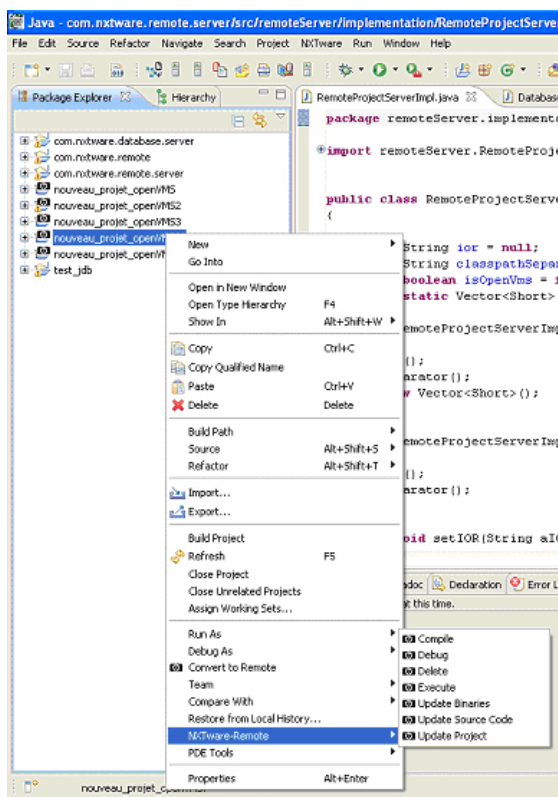
Looking to get more out of HP OpenVMS?

A recent survey reported that 55% of surveyed US IT professionals believe Eclipse-based tools make it possible to extend the utility of applications based on legacy platforms.

The majority of respondents reported that their existing applications would be better maintained and integrated if they could use Eclipse to maintain and develop legacy business logic.



NXTware Remote is the industry's first Eclipse implementation especially designed for OpenVMS running on HP Integrity servers. NXTware Remote is design to deliver powerful benefits to both legacy and contemporary JAVA developers. With NXTware Remote, legacy developers can be productive programming in the languages they know (C/C++, COBOL, FORTRAN and BASIC) using the Eclipse IDE. Developing on Windows or LINUX machine locally, developers can easily deploy the code to OpenVMS for the MAKE, compile and debug processes.



Just as importantly, NXTware Remote is designed to make JAVA developers, with zero OpenVMS experience, immediately productive without training. The process is accomplished with wizards that automate time-consuming tasks and lead less-experienced maintenance engineers and OpenVMS novices through the process. This capability provides IT organizations the flexibility it need to increase productivity and better manage its resources.

Source code management plays a big role in enterprise software development. Eclipse and NXTware Remote fully support SVN and CVS from the workbench.

Additionally, if your company has developed custom tools that are important to your development process, eCube has expertise to seamlessly integrate these strategic capabilities into the Eclipse environment. These custom tools often provide source management, development frameworks, sophisticated make commands and access control.



eCube Systems
Enabling Enterprise Evolution

Evolution Products

NXTware Remote for OpenVMS:

Integrated Remote Development for legacy and new applications

HIGHLIGHTS

- *Eclipse simplifies the maintenance and development of new and legacy business logic on OpenVMS.*
- *Visual tools support multiple legacy and contemporary languages: C/C++, BASIC, FORTRAN, COBOL, JAVA*
- *Fully support extensibility, enabling the integration of custom tools and frameworks into NXTware Remote and Eclipse*
- *Integrated support for HP OpenVMS on both Integrity and Alpha hardware platforms*
- *Wizard-based extension of new and existing OpenVMS applications and business logic to Java and Web Services*
- **Benefit:**
Lowers the cost and increases the productivity of OpenVMS maintenance engineering and development.



eCube Systems

eCube Systems offers a family of middleware evolution products and services that maximize return on technology investment by leveraging existing technical equity to meet evolving business needs. Fortune 1000 companies and government agencies turn to eCube Systems to reduce risk, extend ROI, and increase productivity as they consolidate existing capabilities and evolve legacy systems to contemporary SOA platforms, such as ESB and Web Services.

eCube Systems, LLC, is headquartered in Montgomery, Texas, with marketing offices in Boston, MA and R&D in San Mateo, California, USA. For more information, visit us at <http://www.ecubesystems.com> or contact eCube Systems by email at ev_sales@ecubesystems.com or by telephone: 866-493-4224.

Business Partner



eCube Systems
Enabling Enterprise Evolution

© eCube Systems, L.L.C. 2009

Headquarters
550 Club Drive, Suite 272
Montgomery, TX 77316 USA
T: 936.760.1188
F: 936.449.4880
ev_sales@ecubesystems.com